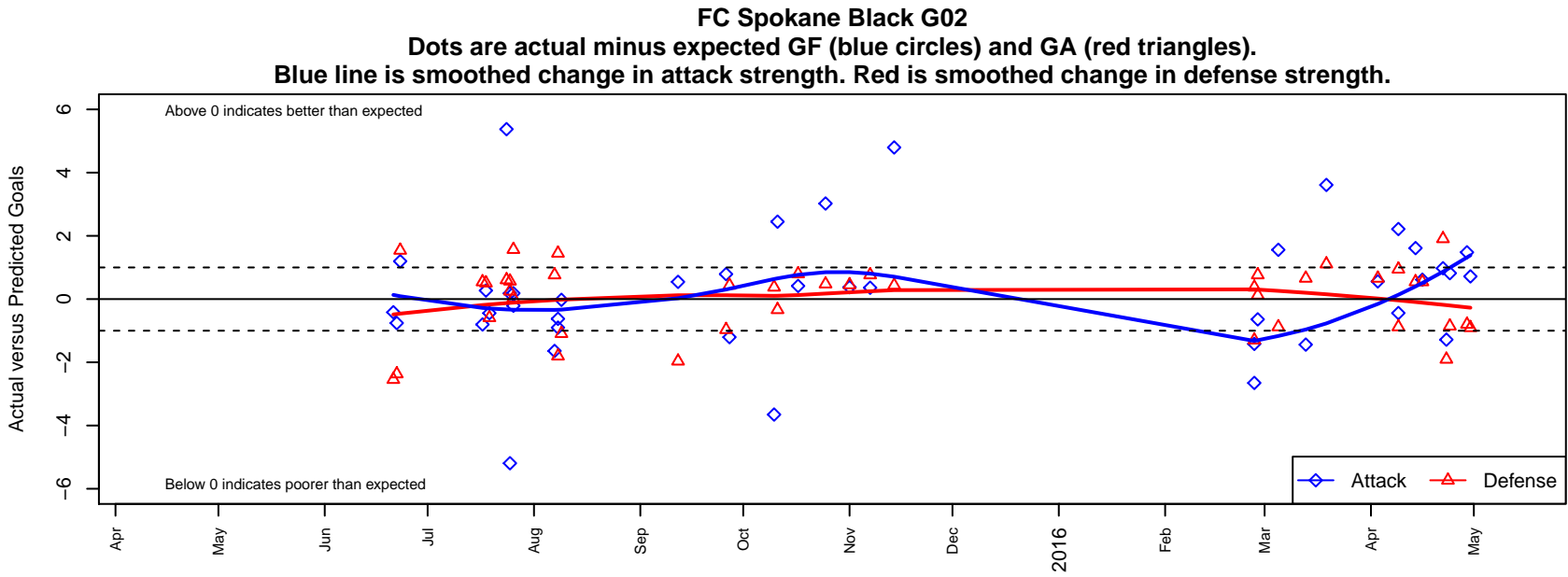


FC Spokane Black G02

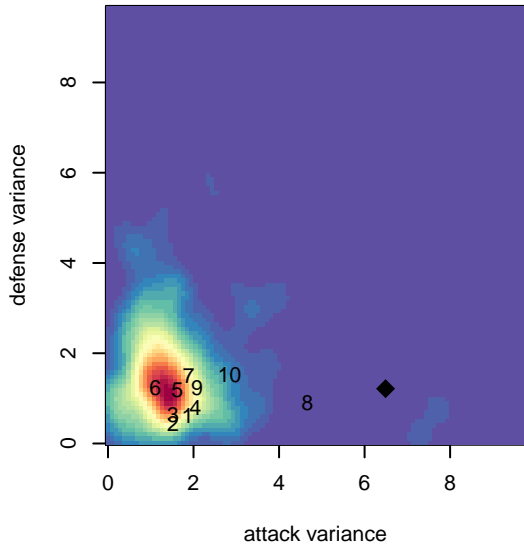
FC Spokane
 Spokane, WA
 G02 total strength=1071
 attack=3.36 defense=1.95
 fall league = PSPL–Inland Div 1 U13
 spr league = Spr PSPL SuperLeague 2 U13
 notes= Pollock 2013; Vela 2014;
 Swoboda 2015

alt names used:
 FC Spokane G02 Black Swoboda
 FC SPOKANE G02 BLACK SWOBODA
 FC SPOKANE G02 BLACK SWOBODA (WA)
 FC SPOKANE G02 BLACK SWOBODA (WA)
 FC SPOKANE G02 BLACK SWOBODA (WA)
 FC Spokane G02 Black–Swoboda
 FC Spokane G02 Black–Swoboda
 FC SPOKANEFC SPOKANE G02 BLACK SWC
 FC SPOKANE G02 BLACK SWOBODA (WA)

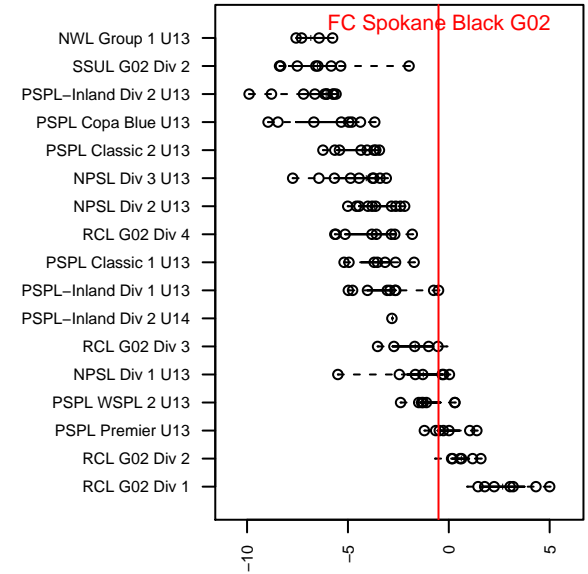
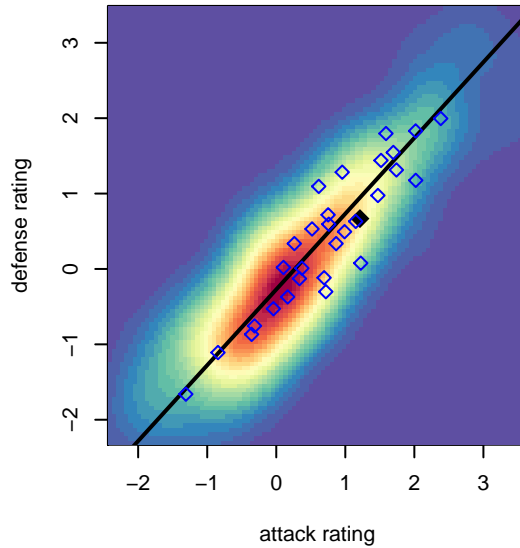
Venues played:
 2015 US Club Regionals U12
 2015 Nike Crossfire Challenge Super Group U'
 2015 River City Cup U–13 Gold U13
 2015 Les Schwab NW Cup U13 Premier U13
 2015 PSPL–Inland Div 1 U13
 2015 Blue Mtn Exchange GU12/GU13
 2015 Spr PSPL SuperLeague 2 U13
 2015 WA Cup GU13 Gold/Silver U13



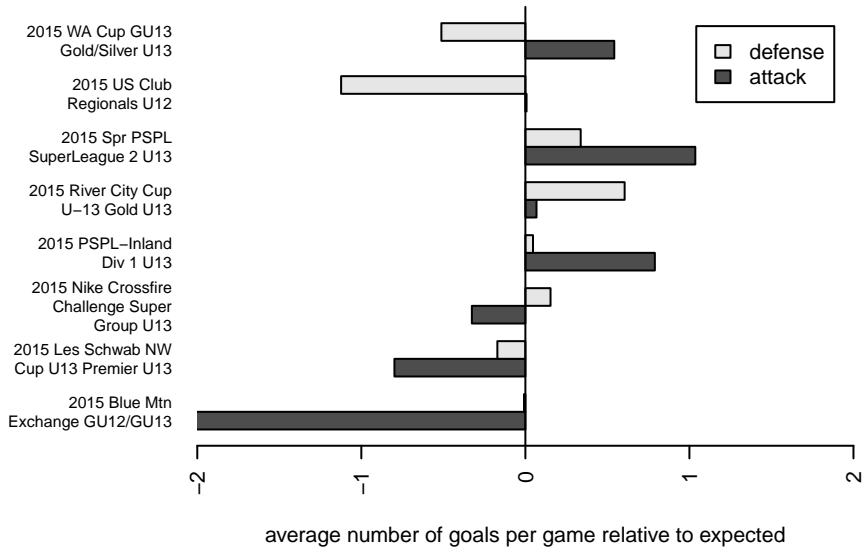
**attack and defense variance (black dot)
relative to other teams
and top 10 in region**



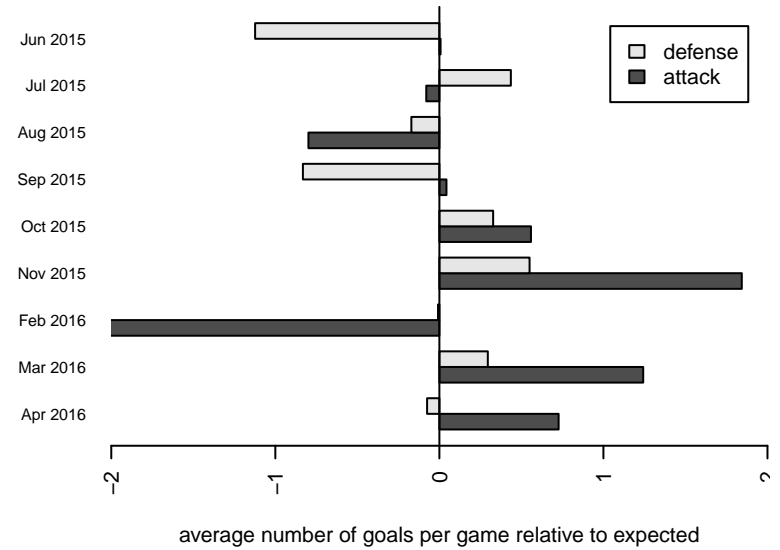
**attack and defense rating
relative to others at age
and all opponents in last 13 months**



Performance relative to 13 month average



Performance relative to 13 month average



date	home		away		venue	pred.home	pred.away
2016-04-30	Wenatchee Fire Black G02	3	FC Spokane Black G02	2	2015 WA Cup GU13 Gold/Silver U13	2.09	1.28
2016-04-29	LWPFC White Stingrays G02	2	FC Spokane Black G02	3	2015 WA Cup GU13 Gold/Silver U13	1.20	1.52
2016-04-24	CWSA Navy G02	2	FC Spokane Black G02	3	2015 WA Cup GU13 Gold/Silver U13	1.14	2.18
2016-04-23	Wenatchee Fire Black G02	4	FC Spokane Black G02	0	2015 WA Cup GU13 Gold/Silver U13	2.09	1.28
2016-04-22	WA East G02	2	FC Spokane Black G02	2	2015 WA Cup GU13 Gold/Silver U13	3.91	1.02
2016-04-16	CDA Sting G02	0	FC Spokane Black G02	3	2015 Spr PSPL SuperLeague 2 U13	0.54	2.39
2016-04-14	FC Spokane Black G02	4	CDA Sting G02	0	2015 Spr PSPL SuperLeague 2 U13	2.39	0.54
2016-04-09	RSA Elite Heather G02	0	FC Spokane Black G02	4	2015 Spr PSPL SuperLeague 2 U13	0.95	1.78
2016-04-09	FC Edmonds Black Ice G02	2	FC Spokane Black G02	1	2015 Spr PSPL SuperLeague 2 U13	1.12	1.44
2016-04-03	FC Spokane Black G02	4	MRFC Blue G02	1	2015 Spr PSPL SuperLeague 2 U13	3.44	1.66
2016-03-19	FC Spokane Black G02	7	Dragons FC G02	0	2015 Spr PSPL SuperLeague 2 U13	3.39	1.11
2016-03-13	MRFC Blue G02	1	FC Spokane Black G02	2	2015 Spr PSPL SuperLeague 2 U13	1.66	3.44
2016-03-05	FC Spokane Black G02	3	FC Edmonds Black Ice G02	2	2015 Spr PSPL SuperLeague 2 U13	1.44	1.12
2016-02-28	Cobra Blue Angels G03	0	FC Spokane Black G02	10	2015 Blue Mtn Exchange GU12/GU13	0.13	20.37
2016-02-28	FC Spokane Black G02	2	Spokane Foxes Platinum G02	0	2015 Blue Mtn Exchange GU12/GU13	2.64	0.76
2016-02-27	FC Spokane Black G02	5	Walla Walla United SC Lightning G02	0	2015 Blue Mtn Exchange GU12/GU13	7.65	0.37
2016-02-27	Three Rivers SC Green RCL G02	2	FC Spokane Black G02	3	2015 Blue Mtn Exchange GU12/GU13	0.70	4.42
2015-11-14	FC Spokane Black G02	11	Breakers Merritt G02	0	2015 PSPL-Inland Div 1 U13	6.20	0.44
2015-11-07	Spokane Foxes Platinum G02	0	FC Spokane Black G02	3	2015 PSPL-Inland Div 1 U13	0.76	2.64
2015-11-01	FC Spokane Black G02	2	Academy Idaho Cads G02	1	2015 PSPL-Inland Div 1 U13	1.62	1.45
2015-10-25	FC Spokane Black G02	9	Valor James G02	0	2015 PSPL-Inland Div 1 U13	5.98	0.48
2015-10-17	FC Spokane Black G02	4	Valor Deatherage G02	0	2015 PSPL-Inland Div 1 U13	3.58	0.80
2015-10-11	WA East Team Sky G02	1	FC Spokane Black G02	6	2015 PSPL-Inland Div 1 U13	0.66	3.55
2015-10-10	Walla Walla United SC Lightning G02	0	FC Spokane Black G02	4	2015 PSPL-Inland Div 1 U13	0.37	7.65
2015-09-27	Breakers Merritt G02	0	FC Spokane Black G02	5	2015 PSPL-Inland Div 1 U13	0.44	6.20
2015-09-26	FC Spokane Black G02	5	Cheney Storm FC G02	2	2015 PSPL-Inland Div 1 U13	4.21	1.03
2015-09-12	Spokane Scotties Klein G02	3	FC Spokane Black G02	2	2015 PSPL-Inland Div 1 U13	1.04	1.46
2015-08-09	FC Spokane Black G02	1	WA East G02	5	2015 Les Schwab NW Cup U13 Premier U13	1.02	3.91

date	home		away		venue	pred.home	pred.away
2015-08-08	FC Spokane Black G02	0	SSC Shadow A G02	5	2015 Les Schwab NW Cup U13 Premier U13	0.90	3.20
2015-08-08	FC Spokane Black G02	1	Academy Idaho Cads G02	0	2015 Les Schwab NW Cup U13 Premier U13	1.62	1.45
2015-08-07	Spokane Foxes Platinum G02	0	FC Spokane Black G02	1	2015 Les Schwab NW Cup U13 Premier U13	0.76	2.64
2015-07-26	Cheney Storm FC G02	1	FC Spokane Black G02	4	2015 River City Cup U-13 Gold U13	1.03	4.21
2015-07-26	Spokane Foxes Premier G02	0	FC Spokane Black G02	1	2015 River City Cup U-13 Gold U13	1.57	0.82
2015-07-25	Valor Collins G02	0	FC Spokane Black G02	3	2015 River City Cup U-13 Gold U13	0.25	8.19
2015-07-25	FC Spokane Black G02	1	Spokane Foxes Premier G02	1	2015 River City Cup U-13 Gold U13	0.82	1.57
2015-07-24	ASE Emerald G02	1	FC Spokane Black G02	7	2015 River City Cup U-13 Gold U13	1.61	1.63
2015-07-19	Barcelona Bay Academy G02	6	FC Spokane Black G02	0	2015 Nike Crossfire Challenge Super Grou	5.41	0.45
2015-07-18	FC Spokane Black G02	1	Crossfire Premier S Crum G02	2	2015 Nike Crossfire Challenge Super Grou	0.73	2.51
2015-07-17	FC Spokane Black G02	0	NW United Premier G02	2	2015 Nike Crossfire Challenge Super Grou	0.80	2.54
2015-06-23	FC Spokane Black G02	2	NW United Premier G02	1	2015 US Club Regionals U12	0.80	2.54
2015-06-22	Indie Chicas Lime G02	5	FC Spokane Black G02	0	2015 US Club Regionals U12	2.63	0.76
2015-06-21	HSC Tiki Taka G02	7	FC Spokane Black G02	0	2015 US Club Regionals U12	4.46	0.42